

Upper Moreland Township Parks & Recreation Committee Project Update

Monday, May 5, 2025 | Final Plan

Woodlawn Park

Construction Documents

Upper Moreland Township

Parks & Recreation Project Update Meeting: 05.12.2025

GILMORE ASSOCIATES | SIMONE COLLINS

1

Master Plan Process



Transparent Public Outreach Process:

- 4 Public Meetings - 139
- 6 Study Committee Meetings
- 4 Focus Group Meetings – 55
- 8 Key Person Interviews - 8
- Web-based Public Opinion Survey - 511
- 30-Day Review Period - 6

**Master Plan
Total Public
Interactions: 719**

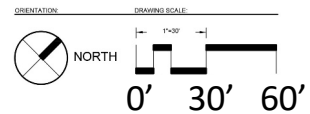
Program Elements

- ADA Walking Trails
- Park Office / Restrooms
- Picnic Pavilions
- Playground area
- Small Plaza / Seating Areas
- Open Play Lawn
- Multiuse Courts
- 70' Baseball Field
- Preserve Heritage trees
- New Tree Plantings
- Stylized Native Meadow Plantings
- Lighting & Cameras
- Parking



LEGEND

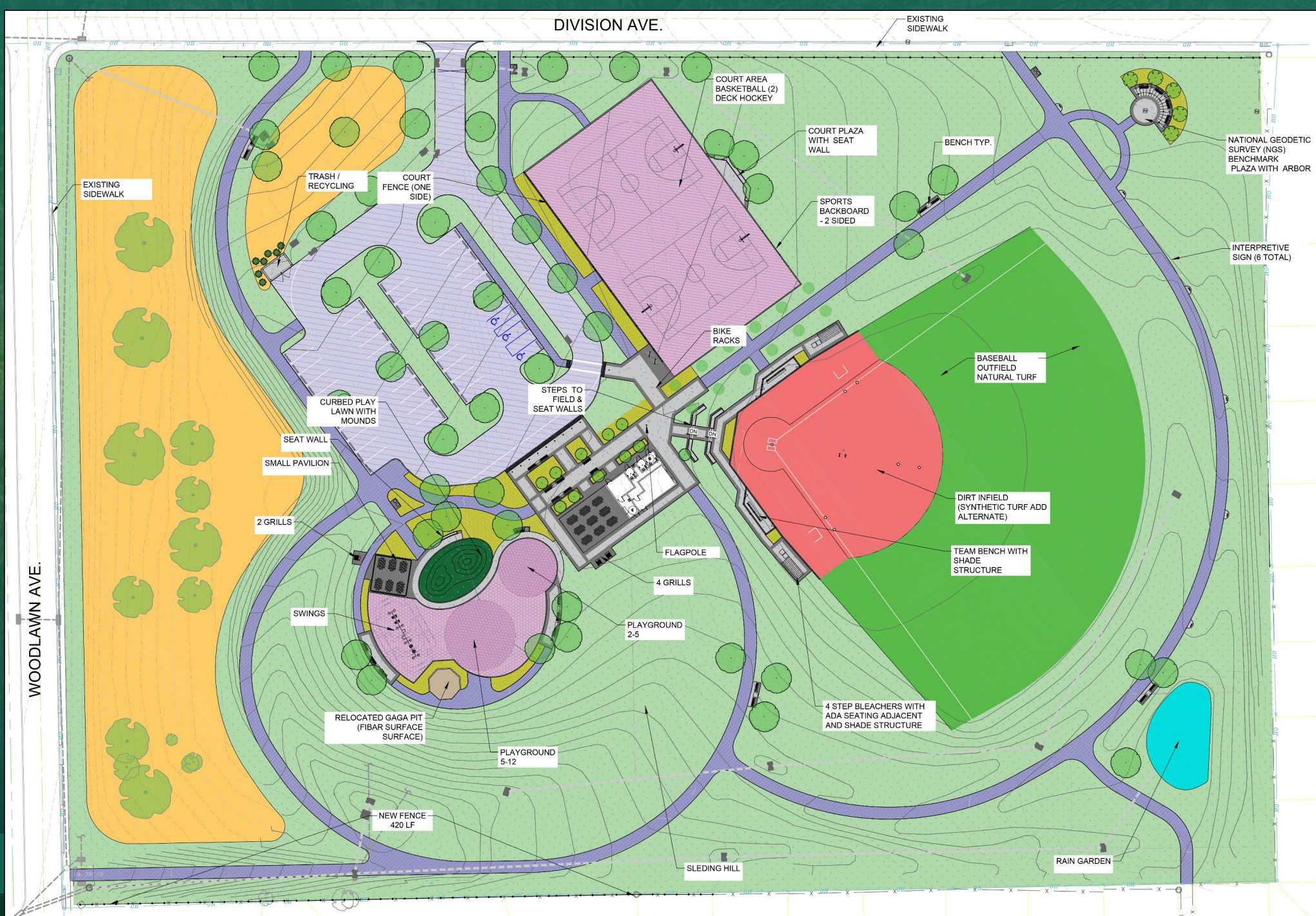
-  VEHICULAR ASPHALT
-  ASPHALT WALKWAYS
-  ASPHALT COURT WITH SPORT SURFACE COATING
-  COLOR CONCRETE
-  CONCRETE PAVEMENT
-  POROUS PLAY SAFETY SURFACE
-  TURF
-  SOD
-  LANDSCAPE BED
-  MEADOW
-  RAIN GARDEN
-  PROPOSED CANOPY TREE
-  PROPOSED UNDERSTORY TREE
-  PROPOSED EVERGREEN TREE
-  FENCE



Woodlawn Park

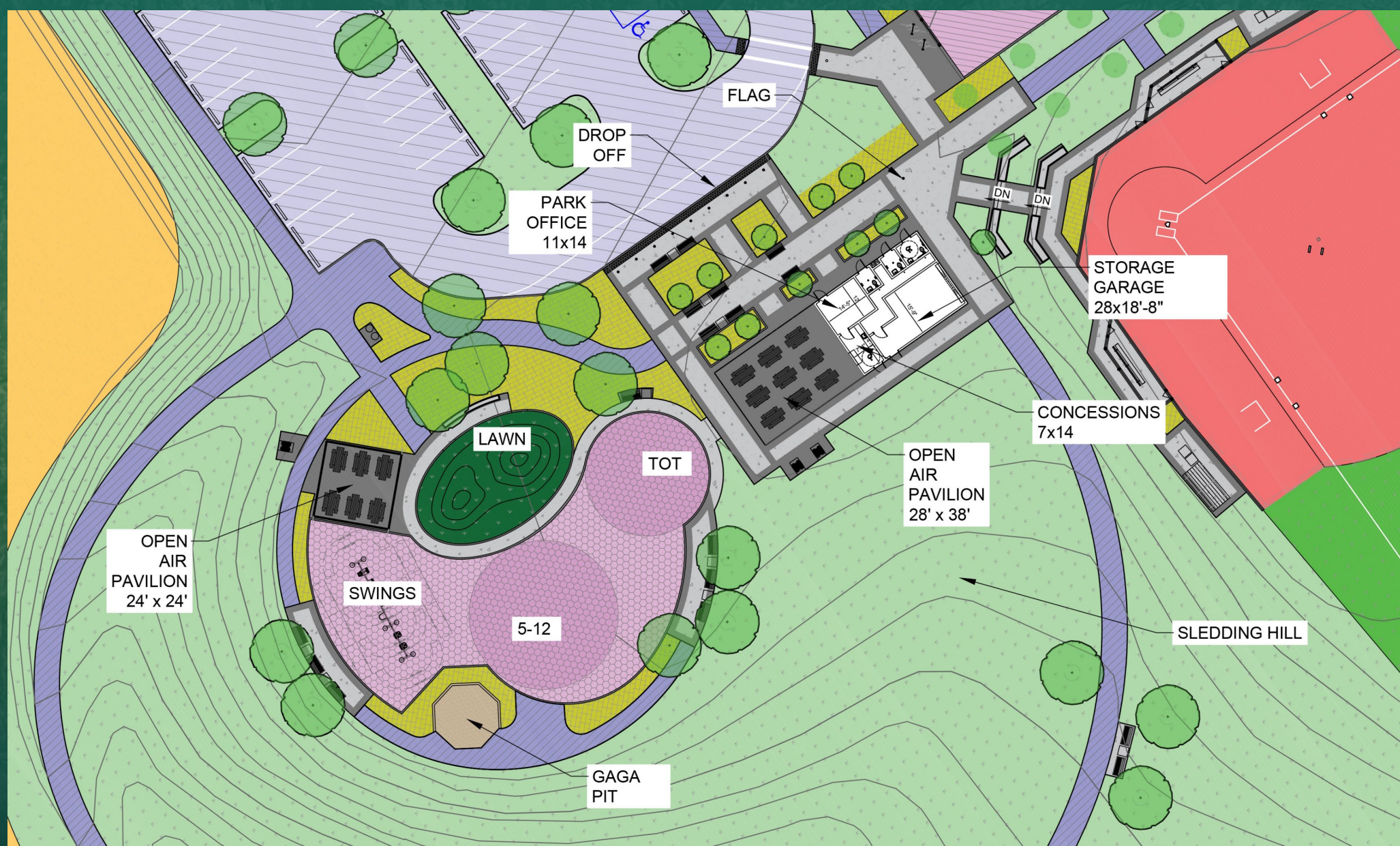
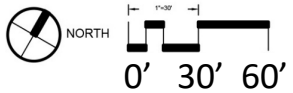
Construction Documents

Upper Moreland Township



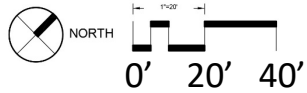
LEGEND

-  VEHICULAR ASPHALT
-  ASPHALT WALKWAYS
-  ASPHALT COURT WITH SPORT SURFACE COATING
-  COLOR CONCRETE
-  CONCRETE PAVEMENT
-  POROUS PLAY SAFETY SURFACE
-  TURF
-  SOD
-  LANDSCAPE BED
-  MEADOW
-  RAIN GARDEN
-  PROPOSED CANOPY TREE
-  PROPOSED UNDERSTORY TREE
-  PROPOSED EVERGREEN TREE
-  FENCE



LEGEND

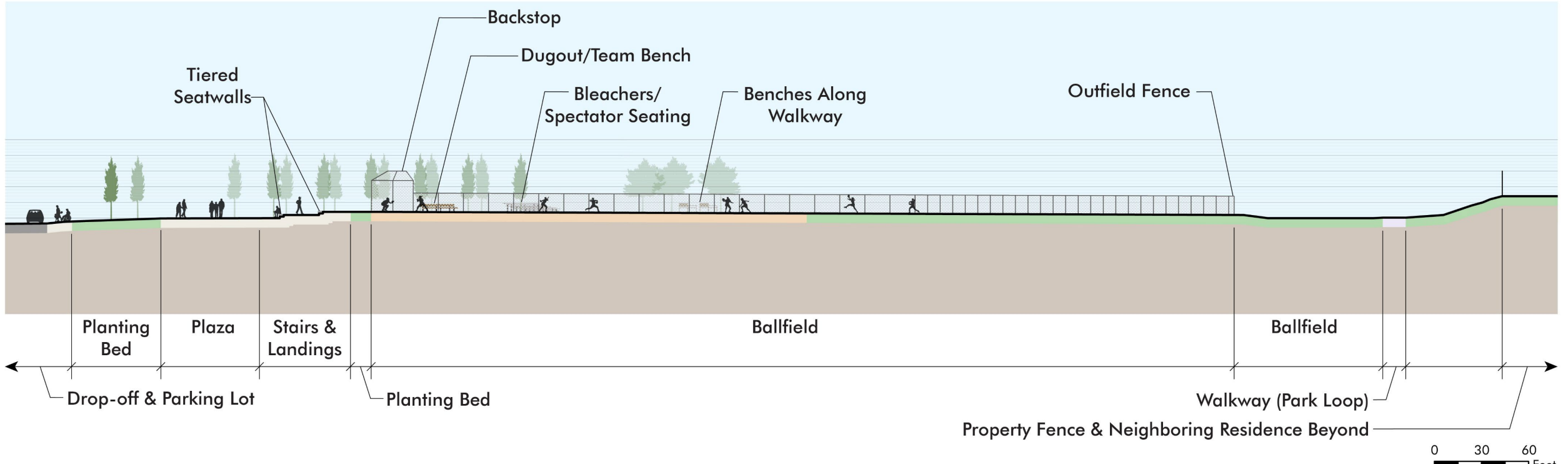
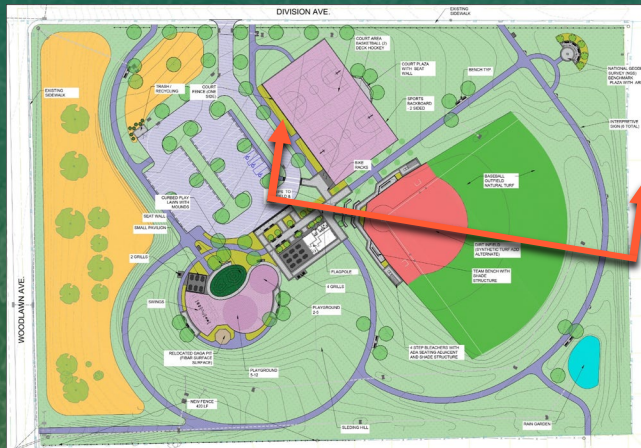
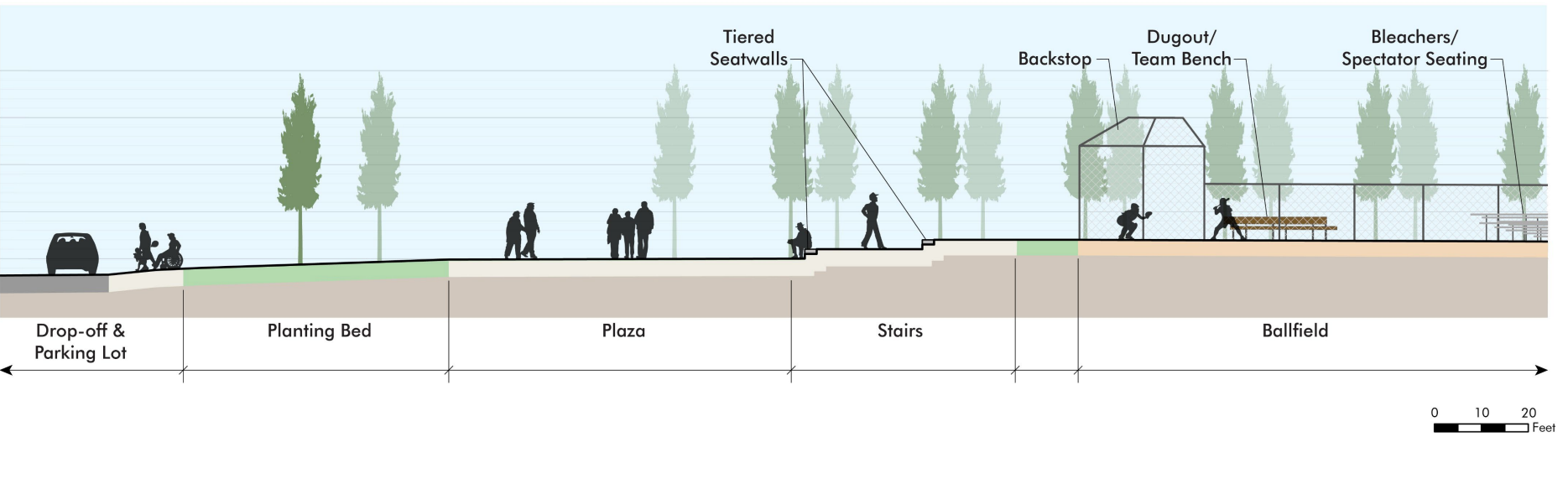
-  VEHICULAR ASPHALT
-  ASPHALT WALKWAYS
-  ASPHALT COURT WITH SPORT SURFACE COATING
-  COLOR CONCRETE
-  CONCRETE PAVEMENT
-  POROUS PLAY SAFETY SURFACE
-  TURF
-  SOD
-  LANDSCAPE BED
-  MEADOW
-  RAIN GARDEN
-  PROPOSED CANOPY TREE
-  PROPOSED UNDERSTORY TREE
-  PROPOSED EVERGREEN TREE
-  FENCE

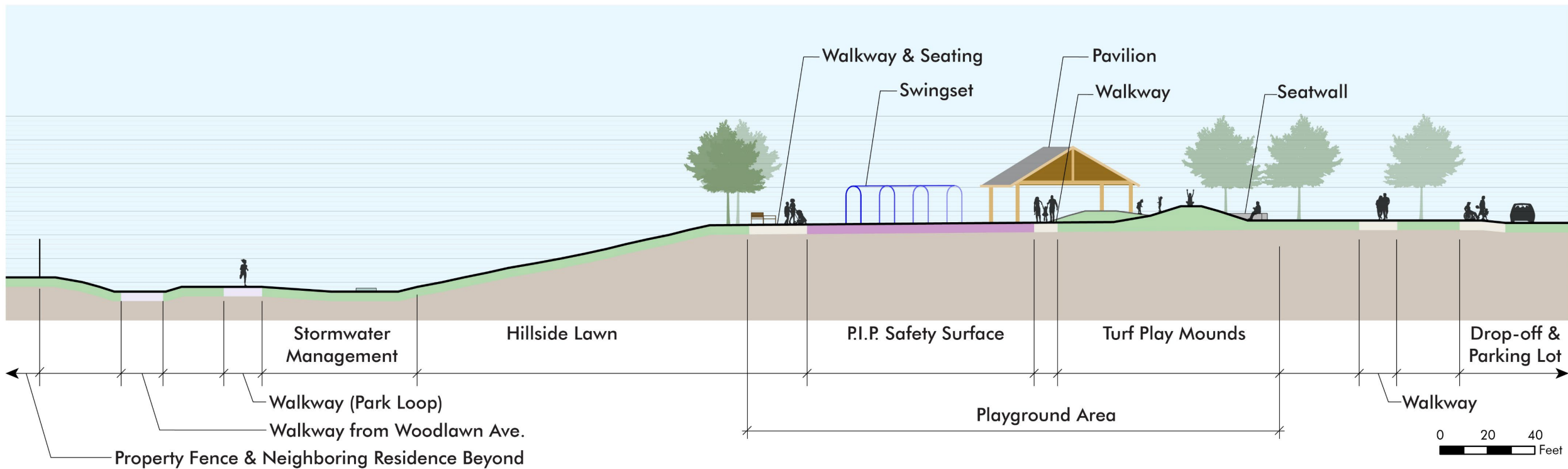
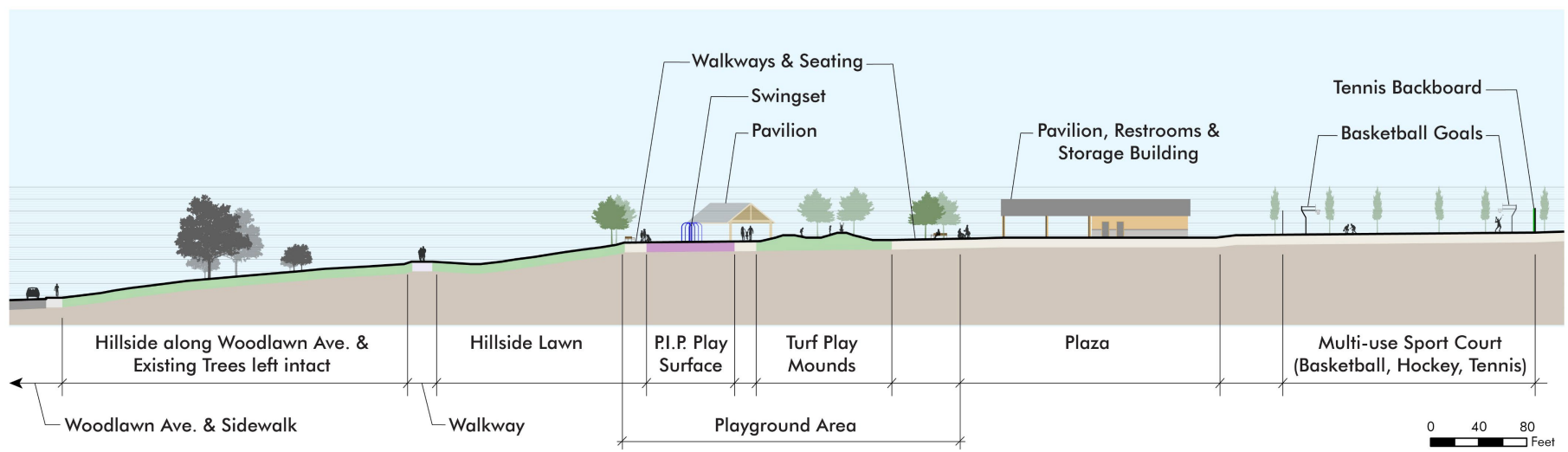


Woodlawn Park

Construction Documents

Upper Moreland Township





Structure Examples



Open Air Pavilion Park Office / Restrooms Building



Plaza Arbor

Woodlawn Park Improvements Project Timeline

- **Spring / Summer 2025** Submit Project NPDES Permit & Complete Bid Documents
- **Winter 2025/2026** Publicly Bid Construction Project
- **Winter / Spring 2026** Award Construction Contract
- **Spring-Fall 2026** Park Construction
- **Fall 2026** Completed Park Improvements

Questions & Answers

Please feel free to contact us anytime

- Simone Collins Landscape Architecture:
 - Sarah Leeper, RLA, Project Manager
 - sleeper@simonecollins.com
 - (610) 239-7601
- Katie Kollar, Director of Parks and Recreation
 - kkollar@uppermoreland.org
 - (215) 659-3100